



Item 7

Consideration to Approve Self-Insured Retention Automobile Liability Program Renewal

**20
26**



Program Details

- Program began 2009
- Initial limit was \$50,000
- Limit increased to \$100,000 in July 2015
- Limit increased to \$500,000 in 2025
- Maximum annual exposure of \$13,000,000
- SIR Reserve expected to be at \$6,240,000 (FY26 - \$4,400,000)



**20
26**





Recommendation

Authorize staff to continue the \$500,000 Self-Insured Retention program with estimated liability of \$6,240,000 that will be determined in accordance with GASB Statement No. 10 as required for public entities.



**20
26**

A red semi-circle graphic located at the bottom right corner of the dark green vertical bar.



Item 8

**Consideration to Approve Renewal
of Commercial Business Package
Insurance**

**20
26**



2025 vs 2026 Year-Over-Year Comparison

May 2026

ESSENTIAL ELEMENTS

Apollo Long Term Agreement

- Rate increase- set at 5% annually on Primary Auto policy.
- Rate increase- set at 8% annually on Lead \$10M Excess Liability.
- Loss Ratio - total incurred not to exceed 50% for the current policy period and any prior policy periods that the insurers have been on risk.

Unearned Premium Credit

- Apollo has agreed to provide a credit for any unearned premium on both the Primary Auto and the first excess layer of \$10M Excess Liability coverages should the number of trips not be met. If there is a credit, it will be applied as a credit toward the 2026–2027 policy term.

London Visits:

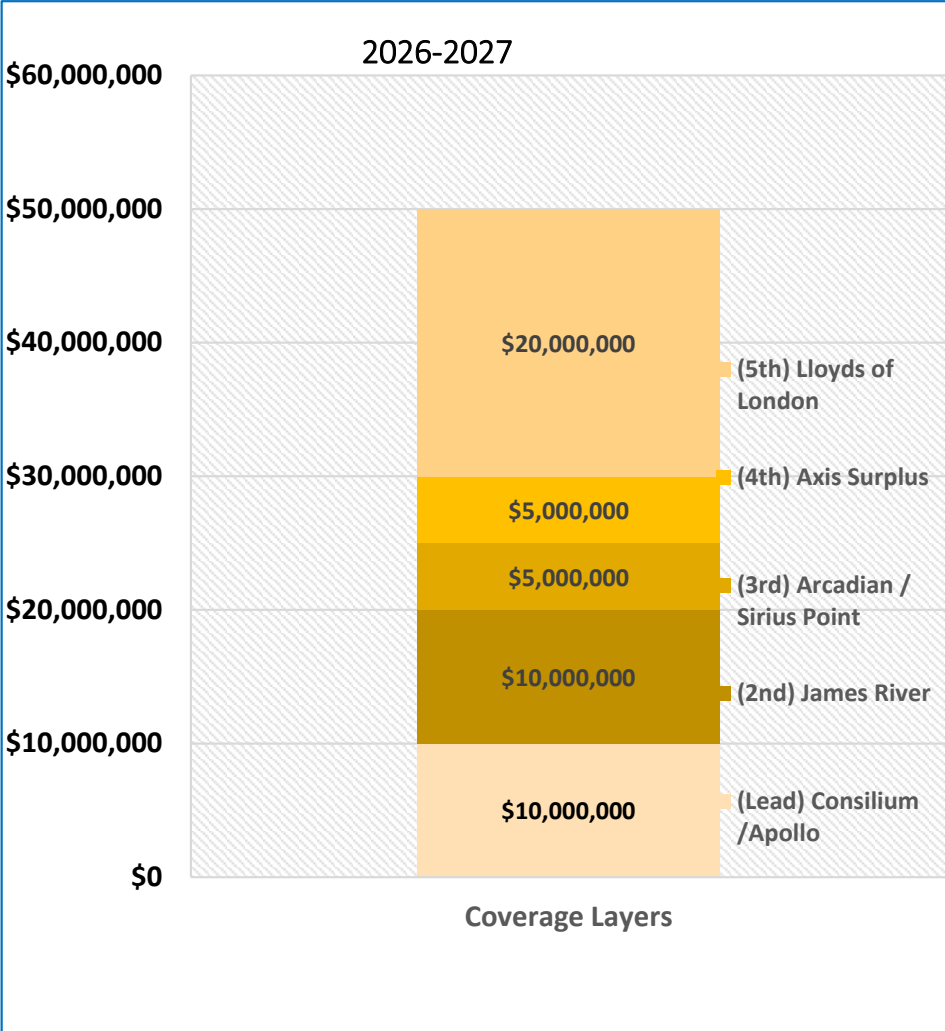
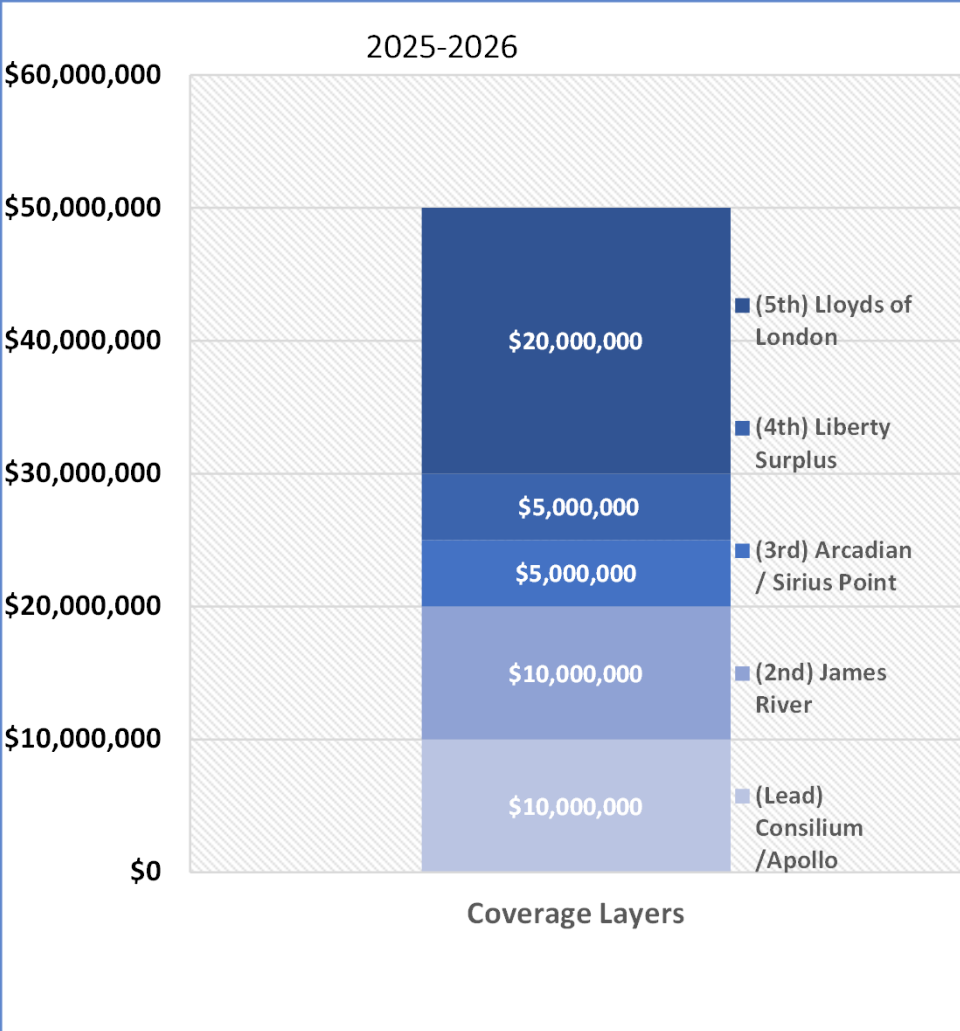
- Apollo, London office, met with many U.S. public entities including public schools, power, gas and electric Utilities and public rail systems.

PRIMARY and FIRST EXCESS LAYER - COMMERCIAL AUTO LIABILITY

Year to Year Comparison

	2025-2026	2026-2027
Insurance Company	Apollo / Consilium	Apollo / Consilium
Liability Limit	\$1,000,000	\$1,000,000
Exposure - Number of Trips	4,000,000	4,206,044
Self-Insured Retention	\$500,000	\$500,000
Aggregate Retention	\$13,000,000	\$13,000,000
Primary Layer		
Rate per Trip	\$1.1300	\$1.1865
Annual Premium (excluding taxes/fees)	\$4,663,736	\$5,149,168
First Excess Layer		
Rate per Trip	\$1.017	\$1.1187
Annual Premium (excluding taxes/fees)	\$4,197,362	\$4,854,930
Total Not to Exceed Cost of All Layers	\$16,908,480	

EXCESS LIABILITY TOWER



Commercial Business Package

		FY26	FY27
SIR up to	\$500,000		
Primary Layer	\$1,000,000	\$4,663,736	\$5,149,168
First Excess	\$5,000,000	\$4,197,362	\$4,854,930
Second Excess	\$5,000,000	\$2,249,324	TBD
Third Excess	\$15,000,000	\$516,416	TBD
Fourth Excess	\$5,000,000	\$438,515	TBD
Fifth Excess	\$20,000,000	\$1,336,181	TBD



20
26



Recommendation

Authorize the Executive Director to:

- Enter into a one-year policy agreement with Lloyds of London/Paragon Company for primary insurance coverage from June 21, 2026, through June 20, 2027;
- Enter into a one-year policy agreement with Lloyds of London/Paragon Company for the first excess layer;
- Enter into a one-year policy agreement with a carrier to be determined for the second excess layer;
- Enter into a one-year policy agreement with a carrier to be determined for the third excess layer;
- Enter into a one-year policy agreement with a carrier to be determined for the fourth excess layer;
- Enter into a one-year policy agreement with a carrier to be determined for the fifth excess layer;
- Enter into one-year policies with various carriers for the above-named insurance policies dependent on the outcome of the quotes received.
- Authorize an amount not to exceed \$16,908,480 for all of the above insurance layers.



**20
26**





Item 9

Facilities Update



20
26



Facilities Plan

The 2017 Comprehensive Operational Review - ownership/control of facilities

Economic Benefits

- More competitive procurements
- Less cost over life of the facility vs. leasing
- Retain infrastructure improvements
- Competitive grants

Operational Benefits

- Long-term growth planning
- Lower impact on operations in case of service provider change
- Avoid loss of facility due to lease expiration



**20
26**





Facilities

Access Leased

- Eligibility: Commerce
- Eligibility: Palmdale
- Administration: El Monte

Access Owned (under development)

- Antelope Valley Region: Lancaster
- Southern Region: Avalon

Contractor Leased/Owned

- Eastern
- West Central
- Northern
- Southern
- Antelope Valley
- Santa Clarita

Annual cost of leases - \$3.2M



**20
26**



Antelope Valley Facility



20
26



Antelope Valley Facility – Next steps

Second submittal under review by the City

If approved, then –

- 30-day CEQA/Public Notice process
- Issue bid for facility construction
- Contract award – August 10, 2026 Board Meeting
- Groundbreaking – September 2026
- Tentative completion – Spring 2028 (18 months)
- Delay in August award may push completion to the end of 2028



**20
26**



AV Facility – Life of Project Budget

	March 2023 (2 parcels)	December 2023 (3 parcels)	December 2025
Total	\$20,448,000	\$26,655,680	\$31,136,713

	Budget	Expended	Federal	Local
Total	\$31,136,713	\$3,611,383	\$19,600,000	\$7,925,330



20
26

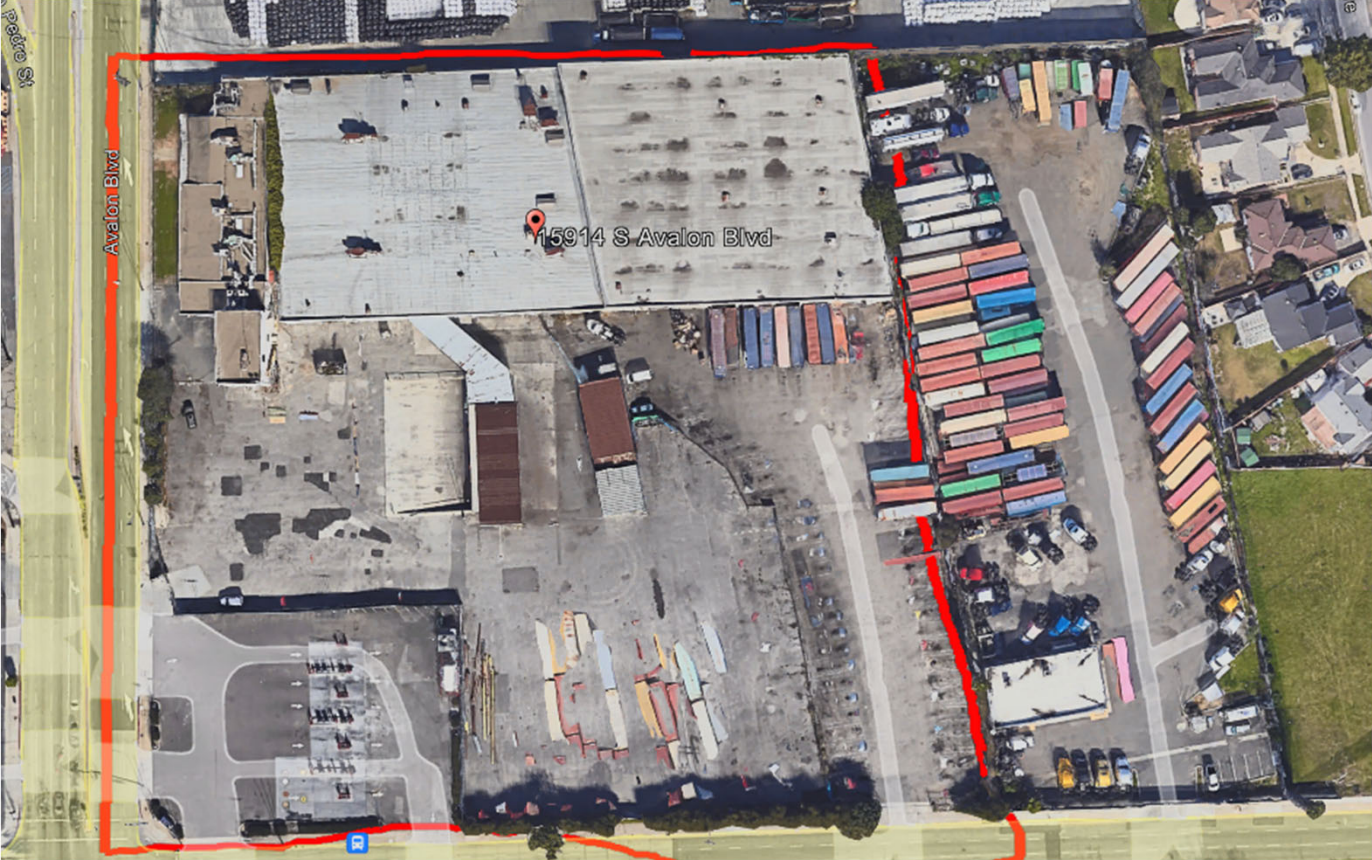
AV Facility – Projected Return (30 years)

Costs	Lease	Purchase
30 Year Totals	\$44,651,293	\$47,632,387
Purchase Net Savings		\$ (2,981,094)
Expected Savings over 30 yrs (\$2/trip)		\$25,340,309
Total Potential Savings		\$22,359,215
Future Value of Property		\$78,807,997



20
26

Southern Region Facility (Avalon)



20
26



Southern Region Facility (Avalon)

- 6.09-acre property acquired for Southern region paratransit operations and maintenance facility
- Funding constraints limit full build-out, need to proceed in phases
- Property purchased – December 2024
- Possession of property – May 2025
- Scope of Work development – November 2025
- Progressive Design procurement issued – February 2026



**20
26**





Progressive Design Procurement

Master Planning Phase

- Establish a phased implementation strategy that maintains operational continuity.

Phase 1: Immediate Needs

- Repair and maintenance for limited operational use, including Olympics
- Fleet usage – 60 to 75 vehicles

Phase 2: Midterm Operational Improvements

- Subject to funding availability
- Fleet usage – 125 to 150 vehicles



**20
26**





Avalon Future Procurement

Phase 3: Long-Term Build-Out

- Subject to funding availability
- Represents the future implementation of the Master Plan
- Will include the modernization and reconfiguration of warehouses
- May also include major expansion elements such as a parking structure or integration of an adjacent parcel to meet long-term operational needs
- Fully operational site



**20
26**



Phase 3

Attachment C

- STANDARD FLEET (10X25)
- OVERSIZED FLEET (12X40)
- PARKING STAFF (COMPACT)
- PARKING STAFF
- MAINTENANCE SPACE
- MAINTENANCE CIRCULATION
- ADMINISTRATION SPACE
- ADMINISTRATION CIRCULATION
- LANDSCAPE
- VERTICAL CIRCULATION
- STORAGE SPACE
- OVERHEAD
- CLEARANCE
- RELOCATED DOORS



20
26

Avalon – Life of Project Budget/Funding

	Budget	Expended	Master Plan	Phase 1	Phase 2	Phase 3
Total	\$82-\$102M	\$10,268,200	\$445,150	\$11,485,830	\$29,647,000	\$40-\$60M

Costs	Lease	Purchase
30 Year Totals	\$96,405,425	\$133,231,810
Purchase Net Savings		(\$36M-\$56M)
Expected Savings over 30 yrs (\$2/trip)		\$188,975,547
Total Potential Savings		\$132-\$153M
Future Value of Property		\$185,874,546

*Note – 2.7 years of bond payments left past Phase 2



20
26



Avalon – Next steps

- CEQA/NEPA Contract in process for Phase 2 FTA concurrence
- Proposals received
 - Contract award – August 10, 2026 Board Meeting

Schedule

- Master Planning Phase: September 2026 – November 2026
- Phase 1: September 2026 - January 2027
- Phase 2: November 2026 - November 2028 (tentative)



**20
26**





Funding Scenarios

Antelope Valley

- Fully Funded
 - \$19.6M Federal Funds
 - \$11.5M General Funds

Avalon Facility

- Fully funded through Phase 1
 - Balance of FDC \$6.3M
 - FY27 \$3.3M capital from Metro
 - Access will request funds for remaining bond payments in future budgets



**20
26**





Next Steps

Continue to -

- Pursue enhanced Medi-Cal reimbursements
- Apply for Federal grants
- Seek additional regional support for Avalon facility
- Amend facilities plan with current status



**20
26**



Item 10

Local, State and Federal Legislative Updates



**20
26**



Local Legislative Update

David Gershwin, David Gershwin Consulting

County of Los Angeles

- Grant Request
- Budget Meetings
- 2026 Supervisorial Elections

City of Los Angeles

- Informational Briefings
- Budget meetings
- 2026 Los Angeles City Council and Citywide Election



**20
26**





State Legislative Update

Jason Gonsalves, Joe A. Gonsalves & Son

Legislative Updates

- 1124 New Laws took effect January 1, 2026
- 1798 New Bills introduced for 2025-2026
- Outlook towards the 2026 Legislative Session



**20
26**





State Legislative Update

The Governor's Office

- State of the State
- Budget Proposal
 - LAO projected \$18 billion deficit with Ongoing Projected State General Fund Deficit through 2028
 - Governor is projecting a \$2.9 billion deficit with a Presidential campaign in 2028
 - Revenues are trending \$6 billion higher and LAO reduced their projection from \$18 billion - \$16 billion

Politically Speaking

- Governor's race, has 10 candidates...Dem Party Chair Rusty Hicks urged candidates to drop out of the race



**20
26**





Federal Legislative Update

Jen Covino, President, Covino Smith & Simon

FTA

- Congratulations on FTA Bus and Bus Facilities Grant Award
- Next Steps towards execution of agreement and implementation of project

Apportionments and Appropriations

- FTA release of FIFA World Cup apportionments and next steps
- Submission of FY 2027 Community Project Funding (House) and Congressionally Directed Spending (Senate) requests to Congressional Delegation
 - Update of status of consideration of Avalon Southern Region Operations and Maintenance Facility
- Programmatic updates



20
26





Federal Legislative Update

Surface Transportation Reauthorization

- Update on House and Senate legislative process
- Overview of Access Services policy priorities for the bill



**20
26**





20
26

Item 11

Operations Update



Statistics

	March 2025	March 2026	% Change
Vehicle Trips Completed	328,371	370,639	+13%
Passenger Trips Completed	406,442	456,861	+12%
Reservation Calls Answered	205,795	230,867	+12%
ETA Calls Answered	71,839	83,639	+16%
Online Reservations	60,003	62,121	+4%



20
26

Performance Report Card

Key Performance Indicator

	Standard	March 2026	FY26
On Time Performance	≥ 91%	90.0%	91.7%
Excessively Late Trips	≤ 0.10%	0.04%	0.03%
Excessively Long Trips	≤ 5%	4.5%*	3.0%
Missed Trips	≤ 0.75%	0.33%	0.29%
Denials	≤ 0	0	0
Access to Work On Time Performance	≥ 94%	97.4%	94.5%
Average Hold Time in Seconds (Reservations)	≤ 120	47	54
Calls On Hold > 5 Min (Reservations)	≤ 5%	2.2%	2.8%
Calls On Hold > 5 Min (ETAs)	≤ 10%	3.2%	3.5%
Complaints Per 1,000 Trips	≤ 4.0	2.0	1.8
Preventable Incidents per 100,000 Miles	≤ 0.25	0.22	0.22
Preventable Collisions per 100,000 Miles	≤ 0.85	0.77	0.74
Mean Miles Between Major Mechanical Failures	≥ 50,000	98,559	74,110

* Limited data in March 2026

Green is good, yellow is cautiously optimistic, red is not meeting standard



20
26



FIFA World Cup Preparations

- For Access riders going to the matches, the booking address will be 1001 S. Stadium Drive in Inglewood, Stand 2
- Access to operate 3 shuttles for Metro
- A communications plan has been drafted up and will be implemented on May 29th, two weeks before the first match
- Access will serve a number of fan zones across Los Angeles County with its regular service



**20
26**





FIFA World Cup Preparations

- Access will activate its Emergency Operations Center to more effectively monitor service to the events and be prepared for the unexpected
- Demand for Access is unknown, but may be low based on previous world class sporting events at SoFi Stadium
- Should be a learning experience to prepare for future larger events



**20
26**



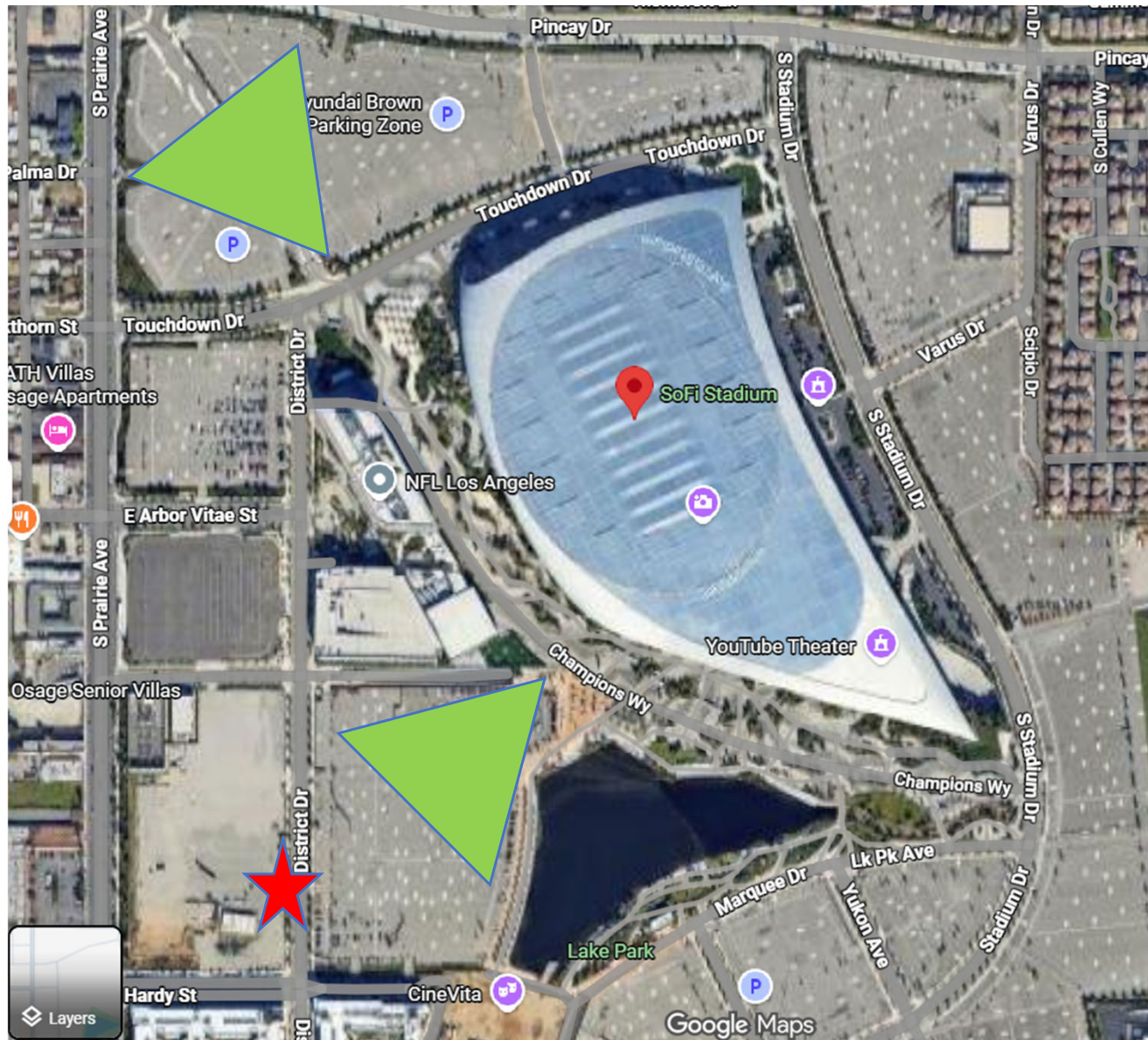
SoFi Stadium PUDO Zone



Pickup and drop-off area and vehicle staging



Security funnel towards venue entrance



Item 16

AB 2561 Vacancies and Recruitment Hearing



**20
26**



Background

- Assembly Bill 2561 requires a public hearing to present agency vacancies, recruitment, and retention efforts prior to adoption of the annual budget.



**20
26**



Workforce Overview

- Vacancy Status: 80 of 82 authorized positions are filled
- Vacancy Rate: 2.4%
- Open Vacancies: Project Administrator & Lead Application Architect
- FY 2026 Vacancies per Month:

Jul	Aug	Sep	Oct	Nov	Dec
6	6	5	7	4	3
Jan	Feb	Mar	Apr	May	June
3	3	4	2	2	NA



20
26



Recruitment Overview

- Challenges: Competitive labor market, geographic constraints, and organizational capacity constraints.
- Strategies: Employee engagement, professional development, and flexible work options.
- Next Steps: Continue to assess recruitment processes and identify opportunities for improvement, including market competitiveness.



**20
26**





Recommendation

- Receive and file.



**20
26**

